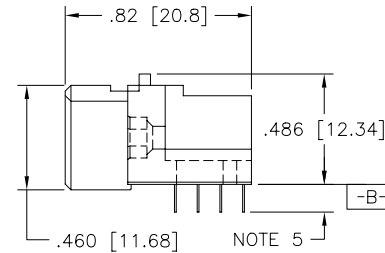
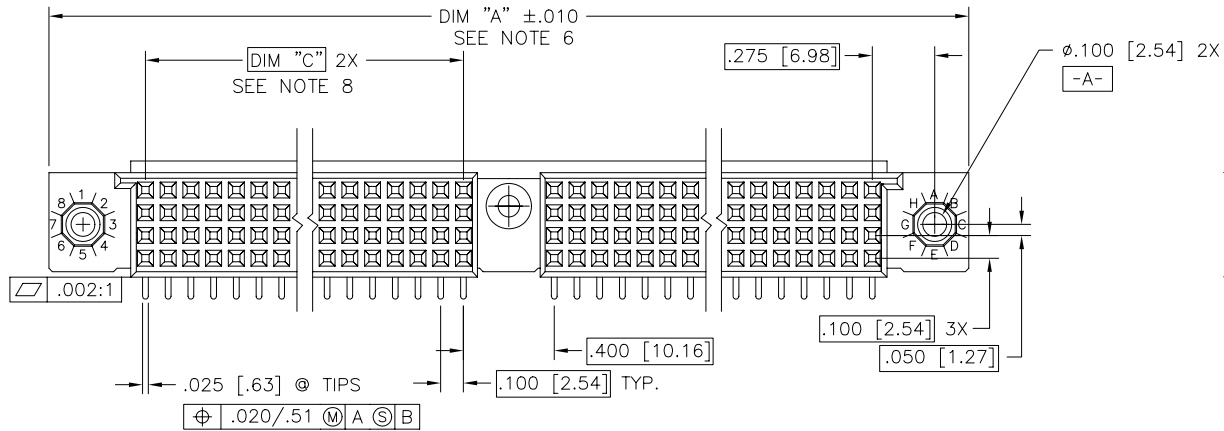
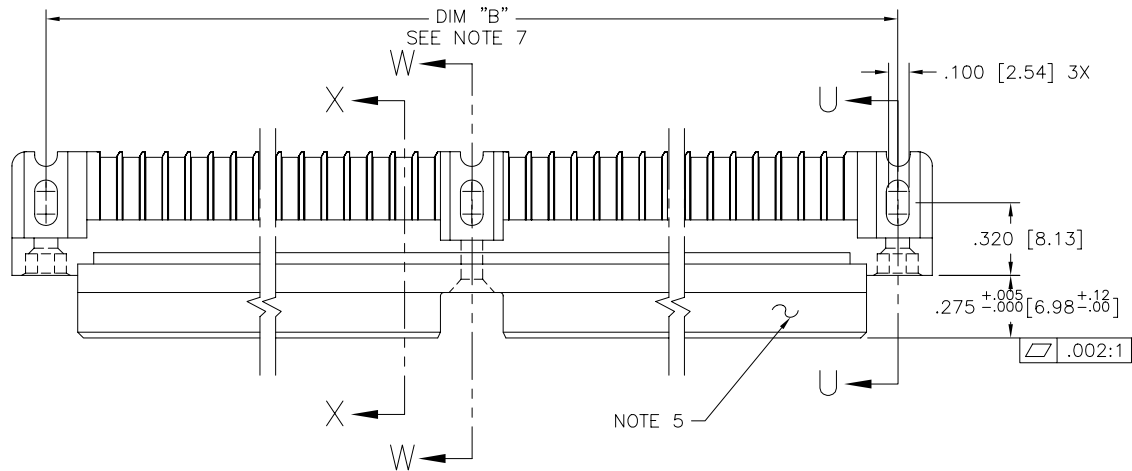




FCIconnect.com

Copyright FCI

PRODUCT NUMBER
SEE NOTE 1



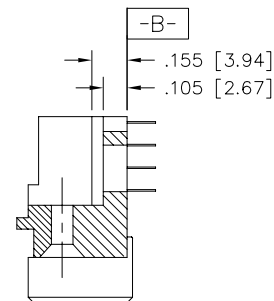
mat'l. code SEE NOTE 3		surface ISO 1302 ✓	tolerance ISO 406 ISO 1101	projection INCH/MM	product family HPC
ltr	ecm no	dr	date	tolerances unless otherwise specified	title
E	v31937	PDP	11/10/93	angles	4 ROW R/A RECEPTACLE SOLDER TAIL, 1 GUIDE PIN
F	v41511	GAH	10/13/94	linear	
G	v50266	SAR	9/05/95	σ±2'	scale 1:1
H	v82251	HTB	12/28/98	dr	D. SHEAFFER
J	v00253	JWS	1/12/00	engr	S. CLARK
K	v05-0510	LP	7/18/05	chr	S. CLARK
L	M06-0255	AEA	7/06/06	appd	S. CLARK
sheet	revision	L	L		
index	sheet	1	2		



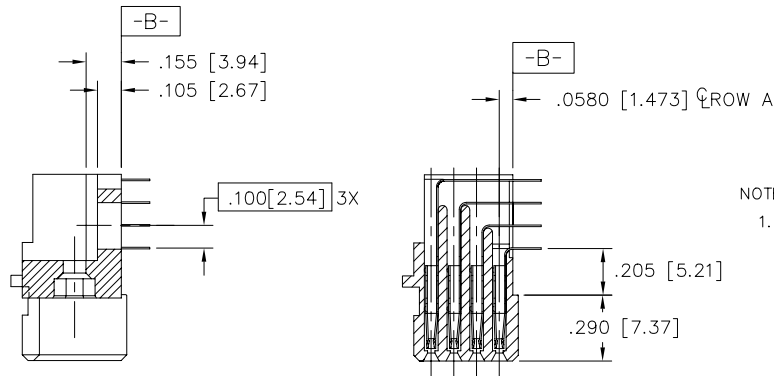
dwg no 50004 sheet 1 of 2 size A3
type Product Customer Drawing

form: A3

PRODUCT NUMBER SEE NOTE 1	NUMBER OF POSITIONS SEE NOTE 2	"Z" - TAIL LENGTH	SOLDER TAIL PLATING	CONTACT PLATING
50004-1YYYY	YYY	NOTE 4	TIN LEAD	30u"/.76um Au
50004-3YYYY	YYY	NOTE 4	TIN LEAD	50u"/1.27um Au
50004-5YYYY	YYY	NOTE 4	TIN LEAD	30u"/.76um GTX
50004-5YYYYZLF	YYY	NOTE 4	TIN	30u"/.76um GTX



SECTION W-W

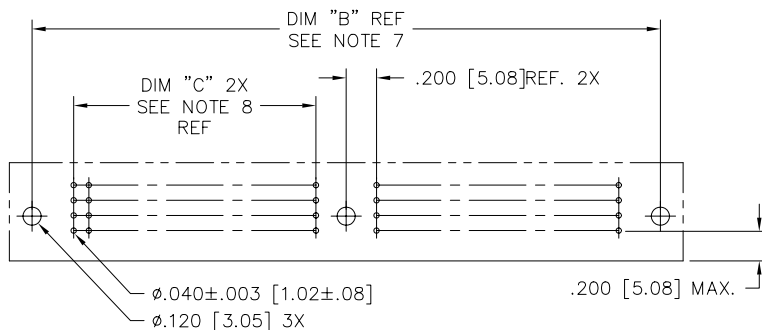


SECTION U-U

SECTION X-X

NOTES:

- PRODUCT NUMBERING CODE:
50004 - X YYY Z LF
 - X: LEAD FREE (OPTIONAL WITH GTX VERSION)
 - YYY: TAIL LENGTH (NOTE 4)
 - Z: NO. OF POSITIONS (NOTE 2)
 - LF: PLATING (SEE TABLE)
 - 50004: BASE NUMBER
- THIS PRODUCT IS CONFIGURED IN SIZES OF 20 THRU 122 COLUMNS IN INCREMENTS OF TWO. i.e.: 20,22,24,26.....118,120,122.
- HOUSING MATERIAL: GLASS AND MINERAL FILLED THERMOPLASTIC. CONTACT MATERIAL: BeCu
- "Z" - TAIL LENGTH OPTIONS:
 E = .125±.010 / 3.18±.25
 F = .145±.010 / 3.68±.25
 H = .180±.010 / 4.57±.25
- COMPANY NAME, PART NUMBER AND LOT CODE TO APPEAR ON THIS SURFACE PER BUS-12-108.
- DIMENSION "A" CALCULATION = .100 (2.54) X NO. OF COLUMNS + 1.05 (26.7)
- DIMENSION "B" CALCULATION = .100 (2.54) X NO. OF COLUMNS + .750 (19.05)
- DIMENSION "C" CALCULATION = .100 (2.54) X NO. OF COLUMNS DIVIDED BY 2 - .100 (2.54)
- PRODUCT WITH "LF" SUFFIX MEETS EUROPEAN UNION DIRECTIVES AND OTHER COUNTRY REGULATIONS AS DESCRIBED IN GS-22-008.
- THIS HOUSING WILL WITHSTAND EXPOSURE TO 260 DEGREES C PEAK TEMPERATURE FOR 10 - 30 SECONDS IN A CONVECTION, INFRA-RED OR VAPOR PHASE REFLOW OVEN.



RECOMMENDED PCB LAYOUT
(ALL HOLES LOCATED ON .100 [2.54] GRID UNLESS OTHERWISE SPECIFIED)

mat'l. code NOTE 3		surface ISO 1302 ✓	tolerance ISO 406 ISO 1101	projection INCH/MM	product family HPC
ltr	ecn	no	ldr	date	title
tolerances unless otherwise specified					4 ROW R/A RECEPTACLE SOLDER TAIL, 1 GUIDE PIN
L					INCH/MM
					scale 1:1
					dwg no
					sheet 2 of 2 size
					50004 A3
					type Product Customer Drawing
sheet index	revision sheet				



FCIconnect.com

Copyright FCI